

# Indice composite:score de BODE

- N Engl J Med 2004; 350:1005-1012
- Basé sur BMI, Obstruction, Dyspnée, capacité à l'Exercice

# Indice composite:score de BODE

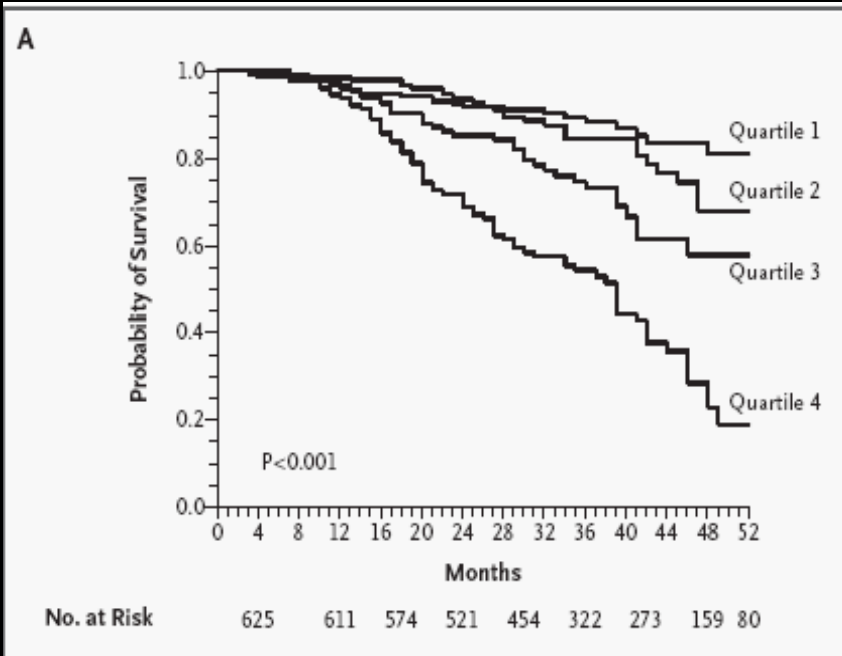
- BMI
- VEMS
- MRC scale
- Test de marche de 6 minutes

# Indice composite: score de BODE

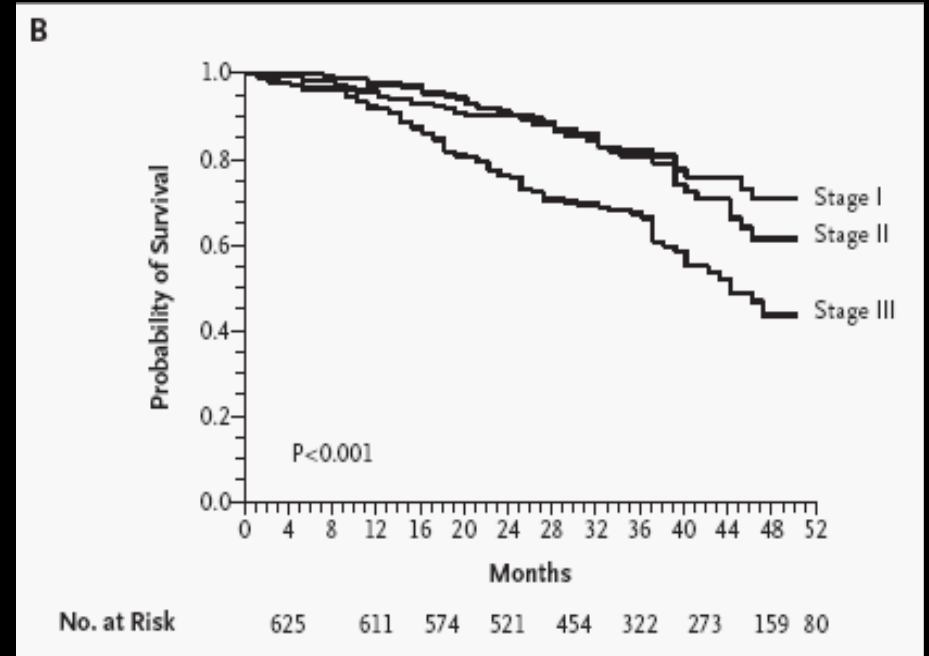
**Table 2.** Variables and Point Values Used for the Computation of the Body-Mass Index, Degree of Airflow Obstruction and Dyspnea, and Exercise Capacity (BODE) Index.\*

Variable	Points on BODE Index			
	0	1	2	3
FEV <sub>1</sub> (% of predicted) †	≥65	50–64	36–49	≤35
Distance walked in 6 min (m)	≥350	250–349	150–249	≤149
MMRC dyspnea scale ‡	0–1	2	3	4
Body-mass index §	>21	≤21		

# Score de BODE



Survie selon le score de  
BODE



Survie selon VEMS